

CABLED™

A revolution in LED Linear Lighting

Welcome to CabLED™, the latest in LED lighting solutions from OPTILED Lighting International Ltd. The result of strong R&D efforts combined with OPTILED's profound understanding of market needs, CabLED™ is a revolutionary LED lighting & Wire Technology* designed for indoor and outdoor environments which allows you to create brilliant lighting in areas you could never illuminate before without the cost of extensive retooling or complex installation procedures.

FLEXIBLE AND EXPANDABLE

CabLED™ uses an unique manufacturing process which can generate far longer sections of lighting – up to 50 meters (164 feet) by 2 power supplies from 2 ends - than you could enjoy in the past. This makes the CabLED™ option ideal for architects, designers and lighting engineers looking for greater flexibility and more effective solutions to innovative lighting designs. CabLED™ customizes design that can be cut in 180mm (7") increments and reconnected (1000 and 8000 Series).

CAN BE INSTALLED ANYWHERE

CabLED™ comes with a complete interconnection and mounting system for both indoor and outdoor which enables it to be mounted on wallboard, concrete, brick, tile, metal, wood, glass or any surface which can support an anchor or adhesive base easily and without installation errors.

ENERGY-EFFICIENT AND ECO-FRIENDLY

Its LEDs use significantly less energy and generate no harmful Ultra-Violet or Infra-Red emissions than traditional light sources. RoHS-compliant: free of mercury and other toxic substances.

SUPERIOR BRIGHTNESS AND QUALITY

Incorporating CREE LEDs, it meets the most stringent international quality and reliability standards. Up to 35,000 hours of high quality performance – lasts 35 times longer than an incandescent bulb.

CabLED™ is the only LED linear lighting solution which offers both supremely flexible, cost efficient installation benefits and exceptional lighting performance with total reliability.

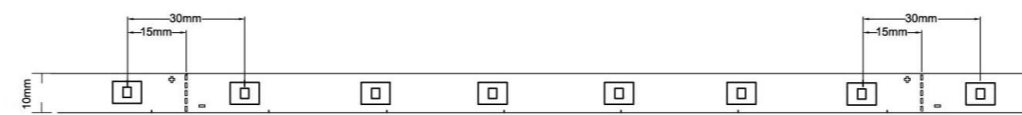
BENEFITS AT A GLANCE

- Long strip length up to 50 meters (164 feet) by 2 power supplies from 2 ends increases design flexibility
- Easy mounting system on any surface reduces labor costs and installation errors
- Totally reliable circuitry and mechanical design (patent pending)
- Energy saving
- Long lasting reliable performance
- Ultra-thin, customizable strips that can be cut in 180mm (7") increments or run continuously for up to 50 meters (164 feet) by 2 power supplies from 2 ends (1000 and 8000 series only)

* Patent pending

Product Dimensions & Specifications

The 'Razor' 1000 Series



The 'Aquatic' 5000 Series



The 'Flexi-Pro' 8000 Series



	'Razor' 1000 Series		'Aquatic' 5000 Series		'Flexi-Pro' 8000 Series					
Part No. (individual pack)	2 040 050 105	2 040 060 105	4 036 050 105	4 036 060 105	4 037 050 405	4 037 060 405	4 037 050 305	4 037 060 305	4 037 050 105	4 037 060 105
Part No. (contractor pack) ^Δ	2 040 050 106	2 040 060 106	—	—	4 037 050 106	4 037 060 106	4 037 050 106	4 037 060 106	4 037 050 106	4 037 060 106
Color	Warm White (3500K)	Cool White (6500K)	Warm White (3500K)	Cool White (6500K)	Warm White (3500K)	Cool White (6500K)	Warm White (3500K)	Cool White (6500K)	Warm White (3500K)	Cool White (6500K)
Lumen per meter	180lm	200lm	150lm	180lm	150lm	180lm	150lm	180lm	150lm	180lm
Lumen Efficacy (lm/W)	49lm/W	54lm/W	40lm/W	46lm/W	40lm/W	46lm/W	40lm/W	46lm/W	40lm/W	46lm/W
Packing	5m per reel		18cm per segment		10m per reel		15m per reel		25m per reel	
CabLED	Pack of 1		—		Pack of 1		Pack of 1		—	
Connectors	—		—		—		—		—	
Driver	—		—		18W Input 100-240V Output DC 24V 30W Input 100-240V Output DC 24V 60W Input 100-240V Output DC 24V 100W input 100-240V Output DC 24V		—		—	
Mechanical	10mm(W) x 3.2mm(H)		12mm (W) x 5.5mm (H)		18cm		12mm(W) x 5.5mm(H)		—	
Dimension	—		—		6 per section		—		—	
Segment Length	—		—		30mm		—		—	
Number of LEDs	—		—		—		—		—	
LED Pitch	—		—		—		—		—	
Weight	60g/m		100g/m		—		100g/m		—	
Material	—		—		UV/IR protected PVC, RoHS Compliant		—		—	
Electrical	—		—		—		—		—	
Input Voltage	—		—		24V		—		—	
Input Current	—		—		154mA		—		—	
Power Consumption per meter	—		—		3.7W		—		—	
Max Connection Length	—		—		25m		—		—	
Photometry	—		—		—		—		—	
Luminous Flux per meter	180lm	200lm	150lm	180lm	150lm	180lm	150lm	180lm	150lm	180lm
Color Rendering Index	80	72	80	72	80	72	80	72	80	72
Color Temperature	3500K	6500K	3500K	6500K	3500K	6500K	3500K	6500K	3500K	6500K
Radiation Angle	120°		110°		—		110°		—	
Reliability	—		—		—		—		—	
Life time	—		—		35000 hrs*		—		—	
Degree of Protection	—		IP68†		—		IP65 (with inter-connections)		—	
Operating Temperature	—		—		-20°C to 50°C		—		—	
Storage Temperature	—		—		-25°C to 60°C		—		—	
Max Loading Force	1kg		10kg		—		10kg		—	
Minimum Bending Radius	50mm		100mm		—		100mm		—	
Flammability	—		—		UL94 V-0		—		—	
Approbations	—		—		CE, UL (pending)		—		—	

* The designed life time is under 24V DC at top 25°C, with 70% lumen maintenance † Once the light strip is cut, IP68 is no longer guaranteed
^ΔFor project order, 18cm per segment

Headquarters Suite 2302, 23/F One Landmark East, 100 How Ming Street, Kwun Tong, Hong Kong
 Tel: +852 2607 4268 / +852 3961 6000 Fax: +852 2838 5631 Email: info@optiled.com www.optiled.com

Regional Offices

China

Shanghai Tel: +86 (0)21 6087 1988 Email: infochina@optiled.com
 Beijing Tel: +86 (0)10 5869 7163
 Guangzhou Tel: +86 (0)20 8363 5142
 Huizhou Tel: +86 (0)752 2687 980
 Shenzhen Tel: +86 (0)755 3335 6511

Asia Pacific

Hong Kong Tel: +852 2607 4268 Email: info@optiled.com
 Tel: +852 3961 6000
 Australia & New Zealand Tel: +61 (0)2 9923 2233 Email: infoanz@optiled.com
 Japan Tel: +81 (0)3 5715 3699 Email: infojapan@optiled.com
 Singapore Tel: +65 6565 3111 Email: infosea@optiled.com
 U.S.A. & Canada Tel: +1 732 225 0600 Email: infous@optiled.com

CREE LEDs The Cree LEDs logo is a trademark of Cree Inc. in the United States and/or other countries.

MKKT-005/12/10 Copyright © 2010 OPTILED. All Rights Reserved.

OPTILED



CABLED™

A revolution in LED Linear Lighting

<http://cabled.optiled.com>

The 'Razor' 1000 Series

Ultimate razor thin, Ultra Bright up to 200 lumen per meter, warm or cool solution for indoor lighting



PRODUCT FEATURES

- Ultra thin - light and flexible
- Ultra bright up to 200 lumen
- Superior light efficiency and evenness of color and light spread

IDEAL FOR

- Cove and contour lighting
- Furniture and cabinets
- Vehicle interiors
- Staircases and handrails
- Ambient shops
- Backlighting for special situations where normally mounting a lighting fixture would be extremely difficult

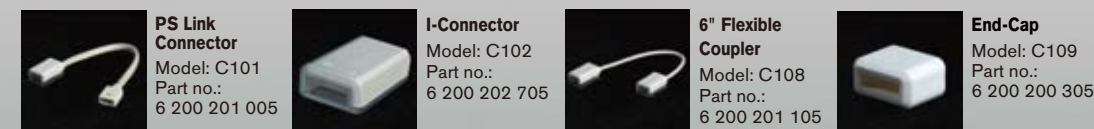
BENEFITS

- Flexibility and unique properties Lends itself to creative lighting design
- Furniture and cabinets Illuminates dark spots
- Backlighting Cost effective, versatile applications
- Easy installation Suitable for various mounting methods
- Safe Virtually unbreakable and free of harmful substance

Accessories

Bonding, linking, extending and adapting are the principal functions of the wide series of accessories which enhance the versatility of the CabLED™ range of lighting strips.

CONNECTORS



MOUNTINGS



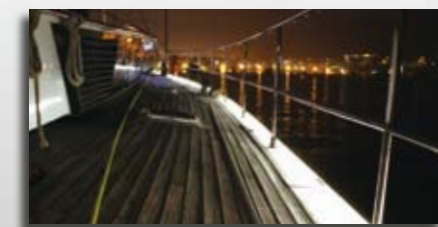
The 'Aquatic' 5000 Series

Waterproof and weather resistant - Ultra Bright up to 180 lumen per meter, warm or cool color for outdoor underwater lighting



PRODUCT FEATURES

- Fully encapsulated for underwater applications
- Ultra bright up to 180 lumen
- Our most powerful underwater lighting solution
- Conforms to IP68 waterproof standard

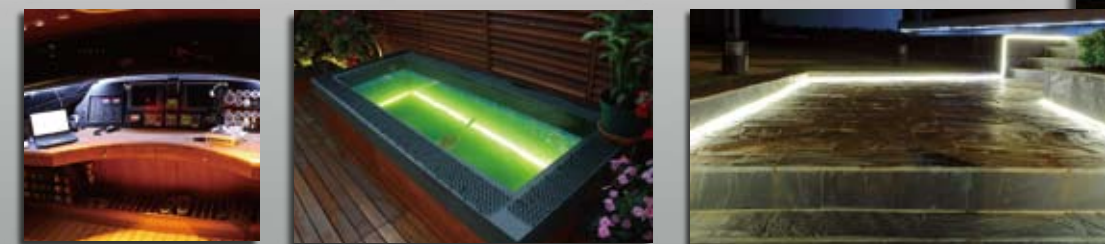


IDEAL FOR

- Marina pontoon lighting Can dramatically improve night visibility along boat pontoons and walkways
- Bath and shower lighting Ideal to incorporate within shower rods and bath rails
- Swimming pool lighting
- Fountain and water display lighting
- Fish pond lighting
- Waterway lighting
- Aquarium lighting
- Spa lighting

BENEFITS

- Supplied with our custom designed aquatic holding clips
- Highly effective marine adhesive
- Custom-made terminals for multiple connections



The 'Flexi-Pro' 8000 Series

The easiest and most versatile indoor and outdoor water resistant lighting solution - up to 180 lumen per meter



PRODUCT FEATURES

- Water resistant (IP65)
- Can be freely customized to suit diverse purpose
- Can be cut and reconnected to any length in multiple of 180mm (7")
- Complete modular lighting solution with inter-connection accessories



IDEAL FOR

- Gardens
- Hallways
- Outdoor lighting for patios, pergolas, etc



Accessories

Bonding, linking, extending and adapting are the principal functions of the wide series of accessories which enhance the versatility of the CabLED™ range of lighting strips.

CONNECTORS



MOUNTINGS

